

Fldigi-DXLabs Gateway

Rick Ellison N2AMG

Fldigi-DXLabs Gateway is a bridging application for use with the Digital Modes application Fldigi by Dave Freese W1HKJ and the DXLabs suite by Dave Bernstein AA6YQ.

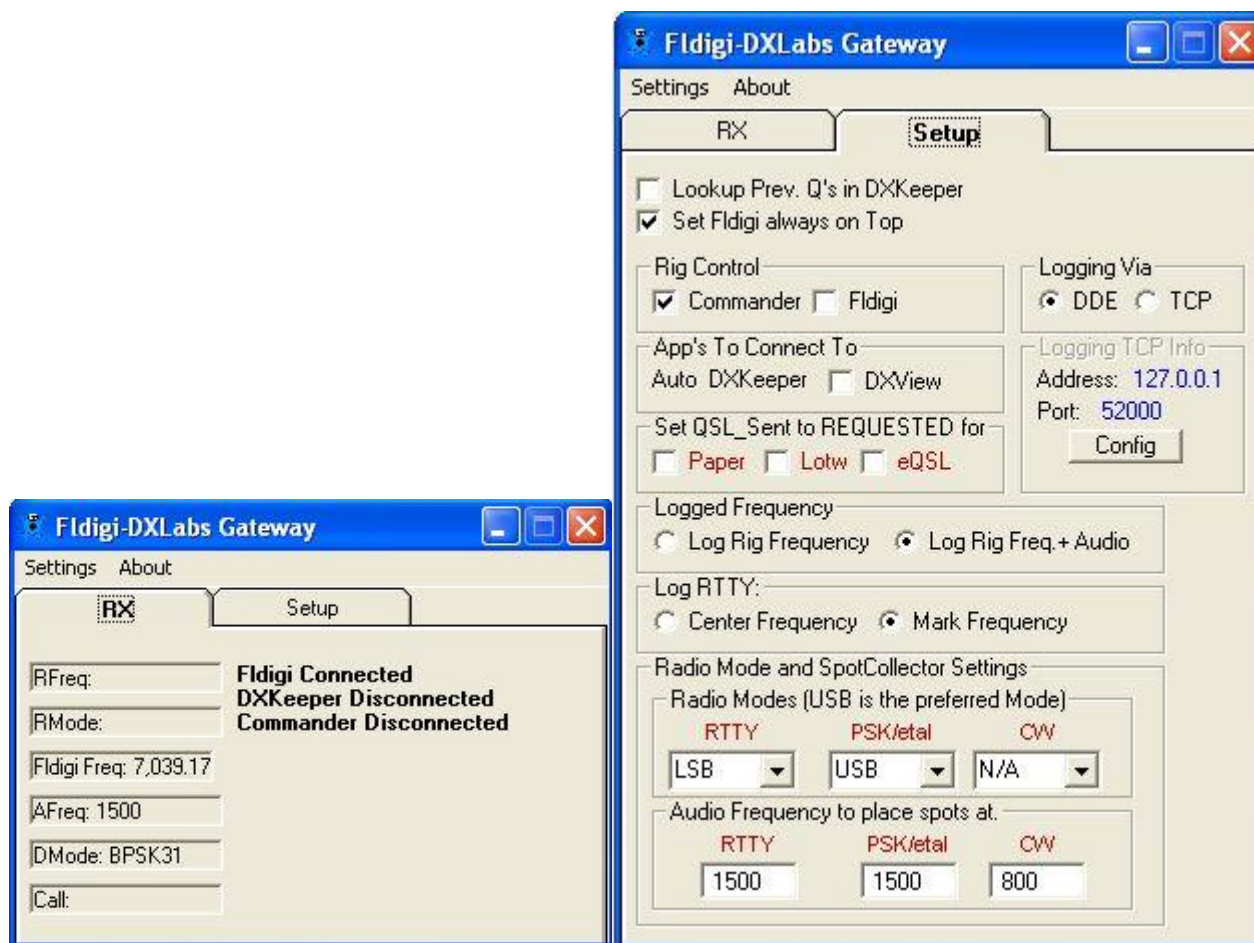
Fldigi-DXLabs Gateway works with the following DXLabs applications.

DXKeeper - Qso's logged in Fldigi will transfer to DXKeeper when the Save QSO Button is pressed. Ability to lookup previous contacts with the callsign entered in Fldigi's callsign field.

Commander - Frequency and Mode information is transferred to Fldigi automatically to act as Fldigi's Rig Control.

DXView - Callsigns entered into Fldigi's callsign field will trigger a lookup in DXView using the callsigns information.

Spotcollector - When Fldigi-DXLabs Gateway is set in SpotCollector to be the Digital Mode Application, Clicking on Spots in SpotCollector will send the spot information to the gateway for setting the correct mode and frequency in Fldigi.



Questions, Comments, Or whatever can be sent to n2amg@n2amg.com

Fldigi-DXLabs Gateway Setup Using Commander for Rig Control

The first time the gateway is run it will ask you to enter the full path to where Fldigi.exe is located on your computer.

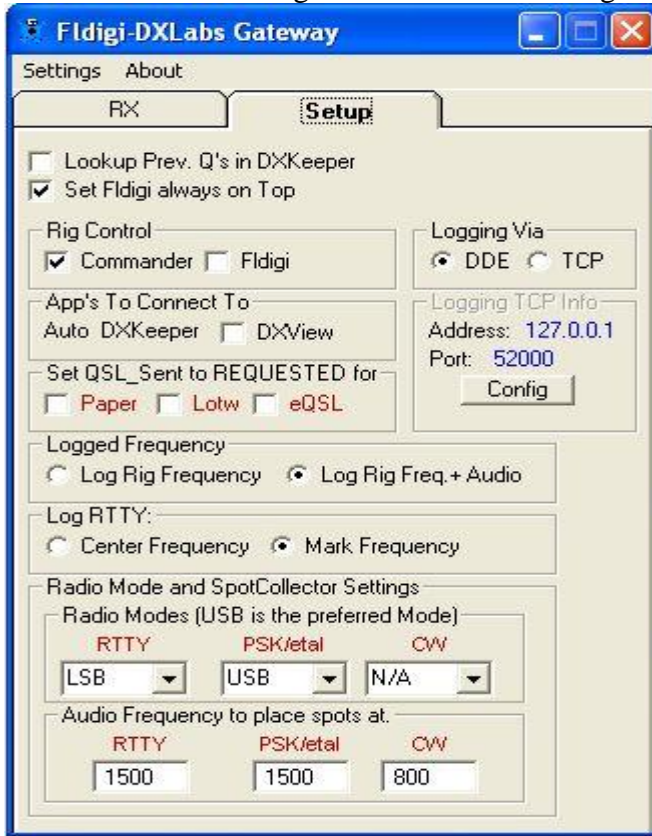
This is needed as the gateway will load Fldigi automatically on start-up.

On this screen you will also be able to enter command line parameters that will load Fldigi with extra settings.



Note: If you use Fldigi at any time in stand-alone mode. Meaning you load it by itself and use your radio to control it. Then in the gateway command line section use the same syntax that I have but use your own directory. This way your settings for rig control will not have to be changed each time you use the gateway. I run multiple copies of Fldigi and each one has it's settings in its own directory so I do not need to switch my radio's around.

This is the Main Configure window when using Commander for radio control.



Rig Control:

Rig Control may also be done from Fldigi. If rig control is set for Fldigi then a connection from Spotcollector will not be available. but connections to DXKeeper and DXView are still possible.

App's to Connect to:

DXKeeper - The link to DXKeeper is made automatically when the gateway starts up. If DXKeeper is not found on startup the gateway will continue to try to connect until it succeeds. The status of the connection is shown on the Main page of the gateway.

DXView - Place a checkmark in this box if you want the gateway to connect to DXView. If this connection is made upon entering a callsign in the callsign window of Fldigi, DXView will do a lookup of that callsign.

Logging Via Setting:

The gateway allows connecting to DXKeeper either via its DDE connection or via DXKeepers TCP connection. Both connections will work fine and in most cases using the default TCP Settings will fine. But if the port or address needs to be changed it can be done by clicking the config button. If using DDE no other setup needs to be done.

Lookup Prev. Q's in DXKeeper:

Placing a checkmark in this box will cause the gateway to send the current callsign in Fldigi to DXKeeper to perform a previous contact lookup.

Set Fldigi always on Top:

Placing a checkmark in this box will place Fldigi the Topmost form of the current open windows. The reason for this is in normal windows operations the form you click on will take the top form status. This means that

Fldigi will be hidden behind other windows making it hard to find.

Sent QSL Sent to REQUESTED for:

Paper, LOTW, eQSL

Placing a checkmark in any of these 3 boxes will cause the appropriate setting in DXKeeper to be changed to R in the QSL Sent box upon logging contacts.

Logged Frequency:

This setting allows the user to choose to log the radio frequency or the radio + audio frequency..

Log RTTY:

This setting allows the user to choose when saving a RTTY Mode contact if they want to save the Center Frequency or the Mark Frequency.

SpotCollector Settings:

Radio Modes:

When SpotCollector sends clicked on spot information to the gateway, the gateway needs to know what radio mode you want your radio set to when that mode of contact comes in. The default is USB. FSK is not supported in Fldigi so only Sideband choices are available. These modes are also used when changing modes in Fldigi. The correct radio mode is sent to the radio upon changing modes.

Audio Frequency to place spot at:

These settings are where in the waterfall passband you want the spotted station to appear at. This defaults to 800hz for CW and 1500hz for RTTY and all other digital modes.

There are also some settings in SpotCollector's configuration window that needs to be changed. These changes are pointed out in the below image by the red square. For the connection to SpotCollector to be made also **THE GATEWAY MUST BE LOADED BEFORE SPOTCOLLECTOR.**

SpotCollector Configuration

Entity Overrides TNC Serial Port Audio Special Callsigns

General

General

Show control explanations ☒ Capture location info from notes ☒ **Operator location**

Confirm spot deletion ☒ Lookup missing location info ☐ NA-E ☒ NA-W ☐ EU ☐ AS ☐

Show 0 as 0 ☐ Automatic DXView lookup ☐ NA-M ☐ SA ☐ AF ☐ OC ☐

Seek everything ☐ Request Prop forecast ☐ Latitude

Set Xcvr split ☒ Display info in title bars ☒ Longitude

Spot Xcvr split ☒ Use multiple monitors ☐ **Log Filter**

Main F-keys via WW ☐ Log debugging information ☐ Call ☒ Entity ☐

Operator callsign **DX Unit**

Miles ☒ Kilometers ☐

Transceiver mode with no Digital Mode Application connected

CW spot **RTTY spot** **non-RTTY Digital spot**

CW ☒ RTTY ☒ RTTY ☐ RTTY-R ☐

CW-R ☐ USB ☐ USB ☒ LSB ☐

PKT ☐ PKT ☐ PKT ☐ PKT-R ☐

Actions with Digital Mode Application connected

	Service	Auto-restore	Auto-minimize
Digital	<input checked="" type="checkbox"/>	<input checked="" type="checkbox"/>	<input type="checkbox"/>
CW	<input checked="" type="checkbox"/>	<input checked="" type="checkbox"/>	<input type="checkbox"/>
SSB	<input type="checkbox"/>	<input checked="" type="checkbox"/>	<input type="checkbox"/>
AM	<input type="checkbox"/>	<input checked="" type="checkbox"/>	<input type="checkbox"/>
FM	<input type="checkbox"/>	<input checked="" type="checkbox"/>	<input type="checkbox"/>

Digital Mode Application

Name

User-defined Sequence after QSY

Post-QSY sequence name

Sub-band Definition

File pathname

Help Browser

Browser pathname

Setting up Fldigi Correctly:

There are only a few settings in Fldigi that need to be set.

In Fldigi is in the Rig Control setup. Select the XML-RPC tab and place a checkmark in the box that is provided, this will allow the gateway to send the correct rig frequency to Fldigi.

If you are using a Com Port for PTT you will need to set the port information on the first tab in Fldigi's rig setup window.

In the Configure area of Fldigi click on the UI selection and then the Gen tab. On that tab under Qso Logging uncheck Clear on Save

Fldigi-DXLabs Gateway Setup Using Fldigi for Rig Control

The first time the gateway is run it will ask you to enter the full path to where Fldigi.exe is located on your computer.

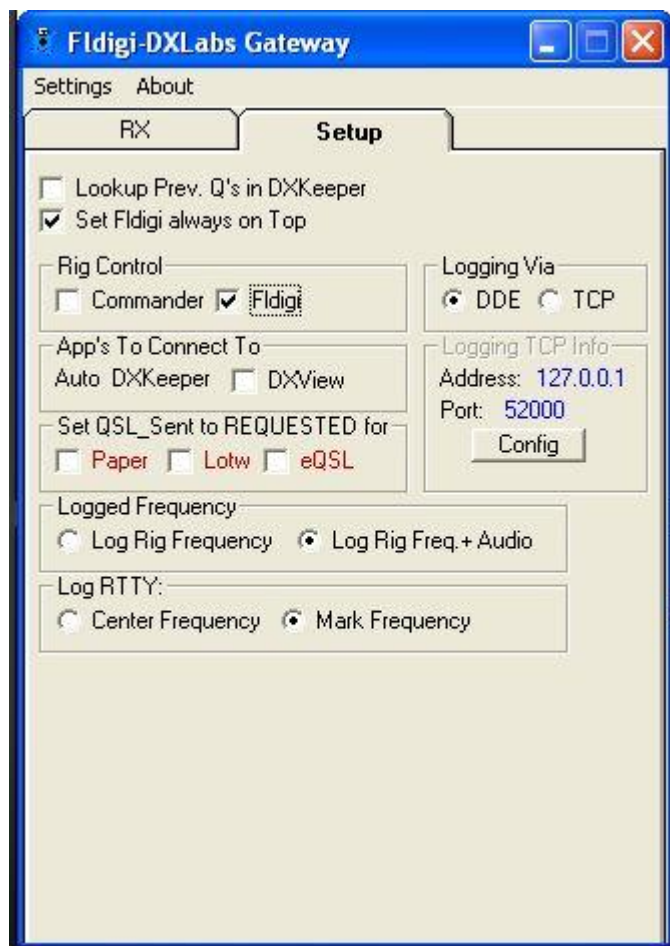
This is needed as the gateway will load Fldigi automatically on start-up.

On this screen you will also be able to enter command line parameters that will load Fldigi with extra settings.



Note: If you use Fldigi at any time in stand-alone mode. Meaning you load by itself and use your radio to control it then in the gateway command line section use the same syntax that I have but use your own directory. This way your settings for rig control will not have to be changed each time you use the gateway. I run multiple copies of Fldigi and each one has it's settings in its own directory so I do not need to switch my radio's around.

This is the Main Configure window when using Fldigi for radio control.



Rig Control:

Rig Control may also be done from Fldigi. If rig control is set for Fldigi then a connection from Spotcollector will not be available. But connections to DXKeeper and DXView are still possible.

App's to Connect to:

DXKeeper - The link to DXKeeper is made automatically when the gateway starts up. If DXKeeper is not found on startup, the gateway will continue to try to connect until it succeeds. The status of the connection is shown on the Main page of the gateway.

DXView - Place a checkmark in this box if you want the gateway to connect to DXView. If this connection is made upon entering a callsign in the callsign window of Fldigi, DXView will do a lookup of that callsign.

Logging Via Setting:

The gateway allows connecting to DXKeeper either via its DDE connection or via DXKeepers TCP connection. Both connections will work fine and in most cases using the default TCP Settings will fine. But if the port or address needs to be changed it can be done by clicking the config button. If using DDE no other setup needs to be done.

Lookup Prev. Q's in DXKeeper:

Placing a checkmark in this box will cause the gateway to send the current callsign in Fldigi to DXKeeper to perform a previous contact lookup.

Set Fldigi always on Top:

Placing a checkmark in this box will place Fldigi the Topmost form of the current open windows. The reason for this is in normal windows operations the form you click on will take the top form status. This means that Fldigi will be hidden behind other windows making it hard to find.

Sent QSL Sent to REQUESTED for:

Paper, LOTW, eQSL

Placing a checkmark in any of these 3 boxes will cause the appropriate setting in DXKeeper to be changed to R in the QSL Sent box upon logging contacts.

Logged Frequency:

This setting allows the user to choose to log the radio frequency or the radio + audio frequency..

Log RTTY:

This setting allows the user to choose when saving a RTTY Mode contact if they want to save the Center Frequency or the Mark Frequency.

Setting up Fldigi Correctly:

Fldigi should have its rig control setup according to the directions provided in the Fldigi help file.

The current rig frequency in Fldigi will be sent to the gateway to allow for logging purposes..

If you are using a Com Port for PTT you will need to set the port information on the first tab in Fldigi's rig setup window.

In the Configure area of Fldigi click on the UI selection and then the Gen tab. On that tab under Qso Logging uncheck Clear on Save

Fldigi-DXLabs Gateway Usage

Usage:

The usage of the gateway is very simple. Load FldigiDXLabsGateway.exe. It will then load Fldigi.exe. Once the gateway makes its internal connections to Fldigi the gateway will minimize to the System Toolbar where it can stay without being touched for anything except changes to the gateway setup. The status of each of the connected applications is available on the main screen of the gateway. When you want to close Fldigi you can either close Fldigi and the gateway will close shortly after or close the gateway and Fldigi will also close.



The first icon on the left is the gateways icon. You can right click on this to bring up a menu or double click on it to show the gateway.

Fldigi-DXLabs Gateway History

1.1.0 (09/24/2008)

Initial Public release

1.1.2 (09/26/2008)

1. Corrects issue with loading of Fldigi after path was set.

1.2.0 (11/28/2008)

1. Connects to DXKeepers TCP Server for logging
2. Allows choice of logging Rig Frequency or Rig + Audio Frequency.
3. Allow choice when Logging a RTTY contact to log the Center Frequency or the Mark Frequency.
4. Adds better error checking to make sure Fldigi.exe is in the actual path indicated.
5. Corrects issue of terminating Fldigi upon closing and causing error messages.
6. Allows Rig Control to be with Fldigi and still allow connecting to DXKeeper and DXView.

1.3.0 (04/15/09)

1. Changes functioning to work with Fldigi v3.11 or later.
2. Allows frequency to be changed from within Fldigi and updates Commander.
3. Adds Debug mode to help diagnose errors.
4. Moves settings from registry to .ini file
5. Allows logging via DDE or TCP.

1.4.0 (03/15/10)

1. Changes functioning to function with Fldigi v 3.2.0 or later.
2. When the gateway minimizes it minimizes to the tray instead of taskbar
3. If Fldigi is closed it will close out the gateway and not prompt to reload Fldigi.
4. The Mode settings in the SpotCollector settings box will serve two purposes.
 - a. Setting the radio mode for when a spot is clicked in SpotCollector
 - b. When the mode is changed in Fldigi the set radio mode will be sent to the radio
5. Removes the feature of loading and saving qso's that were logged without gateway running.

1.4.5 (10/30/10)

1. Corrects issues when radio was in split and Fldigi would turn split off.
2. Some minor code clean-up to make some routines more streamlined.

1.5.0 (2/20/2012)

1. Corrects frequency readout issues that were causing radios to display odd frequency readings
2. Corrects mode reading issue when using LSB radio modes.
3. Corrects Frequency or Mark frequency from being 85hz off.